

Hamburg and Bremen Shipbrokers' Association (VHBS) New ConTex Container Ship Time Charter Assessment Index

New ConTex*		402	
23.05.19		12 mos	24 mos
Gearless	1100 TEU	\$6.554	n.a.
	1700 TEU	\$8.347	
	2500 TEU	\$9.985	
Gearless	2700 TEU	\$9.043	\$10.113
	3500 TEU	\$8.823	\$9.827
	4250 TEU	\$9.183	\$10.103

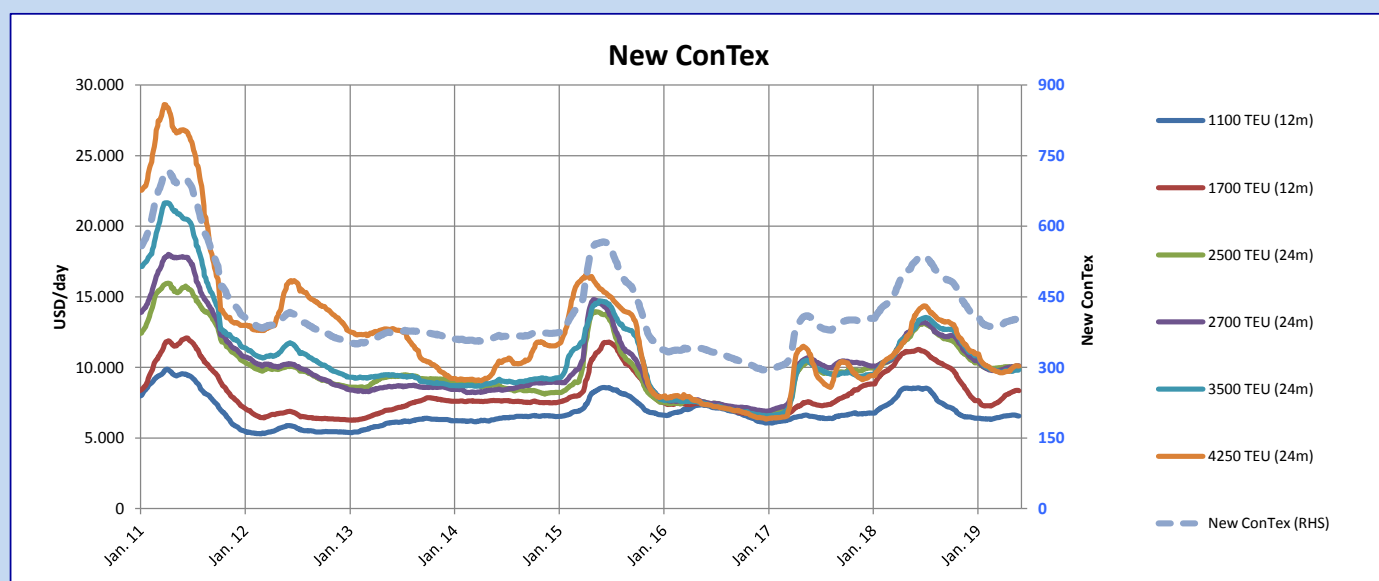
Legend		
↑	up	+ 2% or more
↗	steady up	from +1% to +1,9%
→	steady	+/- 1 %
↘	steady down	from -1% to -1,9%
↓	down	- 2% or less

*New ConTex evaluation is EXCLUDING
2500/2700/3500/4250 TEU groups for
12 months period

New ConTex-Commentary - issued:	23.05.19
<p>The New ConTex level was this week unchanged from the previous week indicating a market which is basically drifting sideways and with charter rates for the governing segments overall being stable at a level which is roughly about 25 pct less than seen at the same time last year. Only tonnage of 5500 TEU and above are able to see a demand level justifying increases in charter rates and in reality also the segments where longer term charters are possible.</p> <p>The question is when the demand will filter through to the smaller segments benefitting the 4250 TEU segment. Based on the current activity level it may take a while. Still it is the only segment which has experienced a month-on-month increase albeit modest at below 4 pct.</p> <p>The remaining feeder segments were faced with fairly low demand and in principle it was the relatively low supply of tonnage in the Atlantic which kind of kept the market stable in the feeder segments between 1100 to 1700 TEU. Although not reflected sofar there was some improvement in activity in the 2500-2800 TEU sector but rate increases were insignificant.</p>	

New ConTex Development

Vessel type	Evaluated Period	Today 23.05.19	Week-on-Week		Month-on-Month		Year-on-Year						
			16.05.19	Change	Change	23.04.19	Change	Change	22.05.18	Change	Change		
New ConTex*		402	402	0	↔	0,0%	399	3	↗	0,8%	522	-120	-23,0%
New ConTex	1100 TEU	\$6.554	\$6.580	-\$26	↘	-0,4%	\$6.598	-\$44	↘	-0,7%	\$8.521	-1.967	-23,1%
	1700 TEU	\$8.347	\$8.378	-\$31	↘	-0,4%	\$8.202	\$145	↗	1,8%	\$11.136	-2.789	-25,0%
	2500 TEU	\$9.985	\$10.009	-\$24	↘	-0,2%	\$10.020	-\$35	↘	-0,3%	\$12.620	-2.635	-20,9%
	2700 TEU	\$10.113	\$10.112	\$1	↔	0,0%	\$10.036	\$77	↗	0,8%	\$12.906	-2.793	-21,6%
	3500 TEU	\$9.827	\$9.801	\$26	↗	0,3%	\$9.738	\$89	↗	0,9%	\$12.724	-2.897	-22,8%
	4250 TEU	\$10.103	\$10.109	-\$6	↘	-0,1%	\$9.767	\$336	↑	3,4%	\$13.486	-3.383	-25,1%
Gearless	2500 TEU	\$9.033	\$9.045	-\$12	↘	-0,1%	\$9.117	-\$84	↘	-0,9%	\$11.817	-2.784	-23,6%
	2700 TEU	\$9.043	\$9.039	\$4	↔	0,0%	\$9.011	\$32	↗	0,4%	\$11.960	-2.917	-24,4%
	3500 TEU	\$8.823	\$8.797	\$26	↗	0,3%	\$8.758	\$65	↗	0,7%	\$11.805	-2.982	-25,3%
	4250 TEU	\$9.183	\$9.167	\$16	↗	0,2%	\$8.810	\$373	↑	4,2%	\$12.459	-3.276	-26,3%



Disclaimer

The brand NewConTex is copyrighted by Verband Hamburger und Bremer Schiffsmakler e.V. ("VHBS e.V.") and is protected by law. The NewConTex may be published only with the source reference © VHBS e.V. It is distributed to the general public for information purposes only and cannot be relied upon as a trading recommendation and does not constitute a solicitation to trade. The reported information is obtained from market sources. While every effort has been made to ensure the accuracy and the completeness of the NewConTex, VHBS e.V. makes no representations, conditions or warranties of any kind, express or implied, about the completeness, accuracy, reliability, or suitability of the NewConTex. Any reliance you place on the NewConTex is therefore strictly at your own risk. Neither VHBS e.V. nor any of its subsidiaries or affiliates nor any employee of the foregoing shall be liable or have any responsibility for any loss, liability or damage, cost or expense including without limitation, indirect or consequential loss or damage, or any loss or damage whatsoever arising from loss of data or profits arising out of, or in connection with, the use of and the reliance on the NewConTex, save for death or personal injury arising from VHBS e.V. negligence and fraudulent misrepresentation that cannot, under German law, be excluded.