

# Hamburg and Bremen Shipbrokers' Association (VHBS)

## New ConTex Container Ship Time Charter Assessment Index

New ConTex*		411	
25.07.19		12 mos	24 mos
Gearless	1100 TEU	\$6,495	n.a.
	1700 TEU	\$8,483	
	2500 TEU	\$8,873	
Gearless	2700 TEU	\$9,166	\$10,029
	3500 TEU	\$9,028	\$9,962
	4250 TEU	\$11,797	\$12,658

Legend		
↑	up	+ 2% or more
↗	steady up	from +1% to +1,9%
→	steady	+/- 1%
↘	steady down	from -1% to -1,9%
↓	down	- 2% or less

\*New ConTex evaluation is EXCLUDING 2500/2700/3500/4250 TEU groups for 12 months period

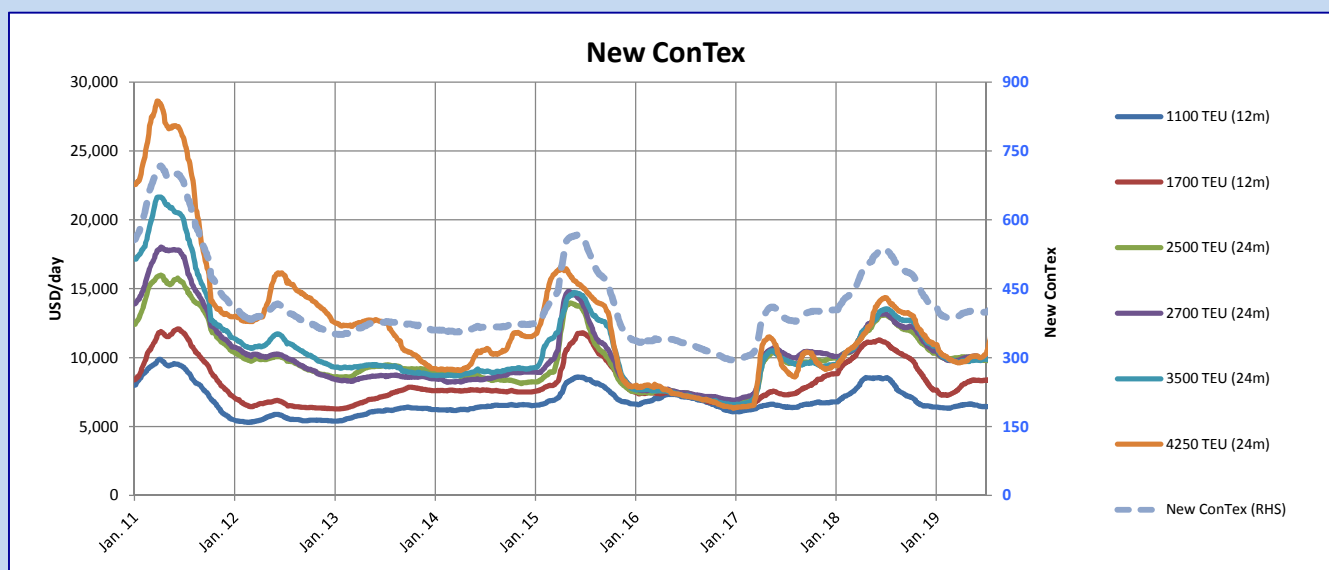
**New ConTex-Commentary - issued: 25.07.19**

The New ConTex moved up from last week by further 5 points to finally 411 at then end of this week. Over the last month it's already a rise of 12 points.

The improvement is clearly been driven by the larger segments which is reflected by the Panamax size of 4250 TEU within the index. This size improved in the index evaluation during the last week by usd 800 daily which is almost 7%. Over the last month it's actually usd 2.500 per day equalling to almost 25%! All other sizes shown in the index rather move sideways. Looking at the Year-on-Year basis we do also see pretty much the same picture, showing the Panamax segment with a minus of less then 10%, but all other sizes are down by more then 20% upto 26,5%.

### New ConTex Development

Vessel type	Evaluated Period	Today 25.07.19	Week-on-Week		Month-on-Month			Year-on-Year			
			18.07.19	Change	Change	25.06.19	Change	Change	24.07.18	Change	Change
<b>New ConTex*</b>		<b>411</b>	406	5	↗ 1.2%	399	12	↑ 3.0%	521	-110	-21.1%
New ConTex	1100 TEU	\$6,495	\$6,458	\$37	↗ 0.6%	\$6,448	\$47	↗ 0.7%	\$8,230	-1,735	-21.1%
	1700 TEU	\$8,483	\$8,428	\$55	↗ 0.7%	\$8,356	\$127	↗ 1.5%	\$10,687	-2,204	-20.6%
	2500 TEU	\$9,796	\$9,767	\$29	↗ 0.3%	\$9,833	-\$37	↘ -0.4%	\$12,850	-3,054	-23.8%
	2700 TEU	\$10,029	\$9,993	\$36	↗ 0.4%	\$9,973	\$56	↗ 0.6%	\$12,875	-2,846	-22.1%
	3500 TEU	\$9,962	\$9,935	\$27	↗ 0.3%	\$9,893	\$69	↗ 0.7%	\$13,287	-3,325	-25.0%
	4250 TEU	\$12,658	\$11,850	\$808	↑ 6.8%	\$10,145	\$2,513	↑ 24.8%	\$13,884	-1,226	-8.8%
New ConTex	2500 TEU	\$8,873	\$8,853	\$20	↗ 0.2%	\$8,899	-\$26	↘ -0.3%	\$11,956	-3,083	-25.8%
	2700 TEU	\$9,166	\$9,127	\$39	↗ 0.4%	\$9,022	\$144	↗ 1.6%	\$11,938	-2,772	-23.2%
	3500 TEU	\$9,028	\$9,048	-\$20	↘ -0.2%	\$8,952	\$76	↗ 0.8%	\$12,284	-3,256	-26.5%
	4250 TEU	\$11,797	\$10,969	\$828	↑ 7.5%	\$9,195	\$2,602	↑ 28.3%	\$12,762	-965	-7.6%



Disclaimer

The brand NewConTex is copyrighted by Verband Hamburger und Bremer Schiffsmakler e.V. ("VHBS e.V.") and is protected by law. The NewConTex may be published only with the source reference © VHBS e.V. It is distributed to the general public for information purposes only and cannot be relied upon as a trading recommendation and does not constitute a solicitation to trade. The reported information is obtained from market sources. While every effort has been made to ensure the accuracy and the completeness of the NewConTex, VHBS e.V. makes no representations, conditions or warranties of any kind, express or implied, about the completeness, accuracy, reliability, or suitability of the NewConTex. Any reliance you place on the NewConTex is therefore strictly at your own risk. Neither VHBS e.V. nor any of its subsidiaries or affiliates nor any employee of the foregoing shall be liable or have any responsibility for any loss, liability or damage, cost or expense including without limitation, indirect or consequential loss or damage, or any loss or damage whatsoever arising from loss of data or profits arising out of, or in connection with, the use of and the reliance on the NewConTex, save for death or personal injury arising from VHBS e.V. negligence and fraudulent misrepresentation that cannot, under German law, be excluded.