



Verband Hamburger
und Bremer
Schiffsmakler e.V.

New ConTex Container Ship Time Charter Assessment Index

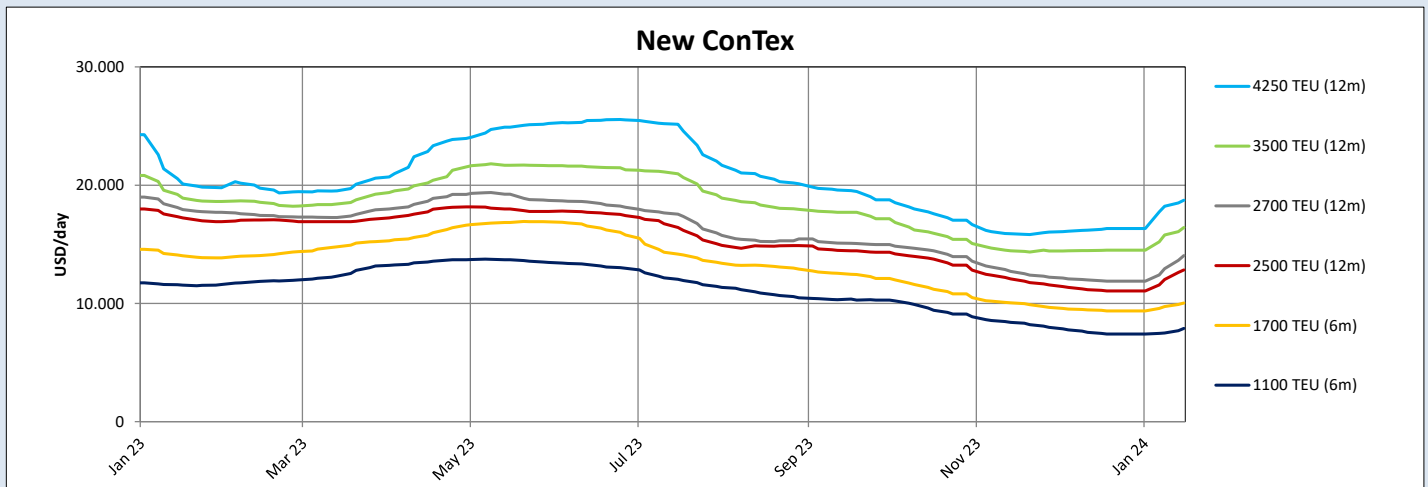
New ConTex*		578	
18.01.24		6 mos	12 mos
Geared	1100 TEU	\$7.888	n.a.
	1700 TEU	\$10.033	
	2500 TEU	\$12.825	
Gearless	2700 TEU	n.a.	\$14.048
	3500 TEU		\$16.415
	4250 TEU		\$18.725

Legend		
↑	up	+ 2% or more
↗	steady up	from +1% to +1,9%
→	steady	+/- 1%
↘	steady down	from -1% to -1,9%
↓	down	- 2% or less

*New ConTex evaluation is EXCLUDING 1800 TEU for 6 months period, 1100/1700/5700/6500 TEU groups for 12 months period & 2500/2700/3500/4250 TEU groups for 24 months period

New ConTex-Commentary - issued:		18.01.24
<p>In an attempt to describe the general optimism about the daily hires, the overall New ConTex index has increased by 4.9% week-on-week, but there is a significant year-on-year decrease of 21.7%. This suggests short-term improvements but highlights a challenging long-term market condition. Indeed, the hire rates have picked up immediately after the Houthis started their attacks on vessels in the the Red Sea. This is happening at a time when the War in Ukraine and Israel still rage on and the inflationary pressures on the global economy can hardly be ignored. Initially, the attacks appeared to be an argument in support of the bleak outlook for the industry in 2024. However, this Houthi disruption contributed to the fact that almost all vessel types, particularly the 1100, 1700 and 2500 TEU vessels, experienced positive rate changes, indicating potential opportunities. Whether these opportunities are short term improvements or a greater shift of trend remains to be determined (even though the general sentiment would agree that the former is more likely). As we already observed, The New ConTex index has a modest increase week-on-week and a substantial year-on-year decrease This suggests short-term improvements (due to the higher demand of ships after the Houthi attacks and therefore higher rates) but also highlights a challenging long-term market condition. Short-term improvements in rates for certain vessel types suggest that there are some good opportunities in the market for them (e.g. demand for 1000 teu vessels in the Med). However, the overall volatility (and now uncertainty) indicates that the commercial shipping industry may continue to experience fluctuations in the near term. Making predictions based on today's New ConTex data will prove to be a risky exercise. We can, however, safely agree that our industry is, presently, marked by a combination of opportunities and challenges, with a need for agility, adaptability, and strategic planning. Shipowners and Charterers must remain vigilant, stay informed about market dynamics, and be prepared to adjust their strategies in response to the evolving economic and geopolitical landscape.</p>		

New ConTex Development											
Vessel type	Evaluated Period	Today	Week-on-Week		Month-on-Month			Year-on-Year			
		18.01.24	11.01.24	Change	Change	19.12.23	Change	Change	19.01.23	Change	Change
New ConTex*		578	551	27	↑ 4,9%	515	63	↑ 12,2%	738	-160	↓ -21,7%
1100 TEU	6 mos	\$7.888	\$7.490	\$398	↑ 5,3%	\$7.458	\$430	↑ 5,8%	\$11.550	-\$3.662	↓ -31,7%
	12 mos	\$7.296	\$6.938	\$358	↑ 5,2%	\$6.931	\$365	↑ 5,3%	\$10.608	-\$3.312	↓ -31,2%
1700 TEU	6 mos	\$10.033	\$9.727	\$306	↑ 3,1%	\$9.410	\$623	↑ 6,6%	\$14.029	-\$3.996	↓ -28,5%
	12 mos	\$9.396	\$9.092	\$304	↑ 3,3%	\$8.856	\$540	↑ 6,1%	\$13.342	-\$3.946	↓ -29,6%
1800 TEU	6 mos	\$11.427	\$10.977	\$450	↑ 4,1%	\$10.316	\$1.111	↑ 10,8%	-	-	-
2500 TEU	12 mos	\$12.825	\$12.023	\$802	↑ 6,7%	\$11.100	\$1.725	↑ 15,5%	\$17.236	-\$4.411	↓ -25,6%
	24 mos	\$11.082	\$10.655	\$427	↑ 4,0%	\$10.132	\$950	↑ 9,4%	\$14.945	-\$3.863	↓ -25,8%
2700 TEU	12 mos	\$14.048	\$12.934	\$1.114	↑ 8,6%	\$11.923	\$2.125	↑ 17,8%	\$17.941	-\$3.893	↓ -21,7%
	24 mos	\$12.173	\$11.625	\$548	↑ 4,7%	\$10.950	\$1.223	↑ 11,2%	\$15.768	-\$3.595	↓ -22,8%
3500 TEU	12 mos	\$16.415	\$15.778	\$637	↑ 4,0%	\$14.485	\$1.930	↑ 13,3%	\$18.905	-\$2.490	↓ -13,2%
	24 mos	\$14.420	\$14.055	\$365	↑ 2,6%	\$13.005	\$1.415	↑ 10,9%	\$16.785	-\$2.365	↓ -14,1%
4250 TEU	12 mos	\$18.725	\$18.213	\$512	↑ 2,8%	\$16.268	\$2.457	↑ 15,1%	\$20.105	-\$1.380	↓ -6,9%
	24 mos	\$16.390	\$15.985	\$405	↑ 2,5%	\$14.738	\$1.652	↑ 11,2%	\$18.145	-\$1.755	↓ -9,7%
5700 TEU	12 mos	\$23.844	\$22.533	\$1.311	↑ 5,8%	\$21.000	\$2.844	↑ 13,5%	\$28.011	-\$4.167	↓ -14,9%
6500 TEU	12 mos	\$26.128	\$24.778	\$1.350	↑ 5,4%	\$23.389	\$2.739	↑ 11,7%	\$33.789	-\$7.661	↓ -22,7%



Disclaimer
The brand NewConTex is copyrighted by Verband Hamburger und Bremer Schiffsmakler e.V. ("VHBS e.V.") and is protected by law. The NewConTex may be published only with the source reference © VHBS e.V. It is distributed to the general public for information purposes only and cannot be relied upon as a trading recommendation and does not constitute a solicitation to trade. The reported information is obtained from market sources. While every effort has been made to ensure the accuracy and the completeness of the NewConTex, VHBS e.V. makes no representations, conditions or warranties of any kind, express or implied, about the completeness, accuracy, reliability, or suitability of the NewConTex. Any reliance you place on the NewConTex is therefore strictly at your own risk. Neither VHBS e.V. nor any of its subsidiaries or affiliates nor any employee of the foregoing shall be liable or have any responsibility for any loss, liability or damage, cost or expense including without limitation, indirect or consequential loss or damage, or any loss or damage whatsoever arising from loss of data or profits arising out of, or in connection with, the use of and the reliance on the NewConTex, save for death or personal injury arising from VHBS e.V. negligence and fraudulent misrepresentation that cannot, under German law, be excluded.