



Verband Hamburger
und Bremer
Schiffsmakler e.V.

New ConTex Container Ship Time Charter Assessment Index

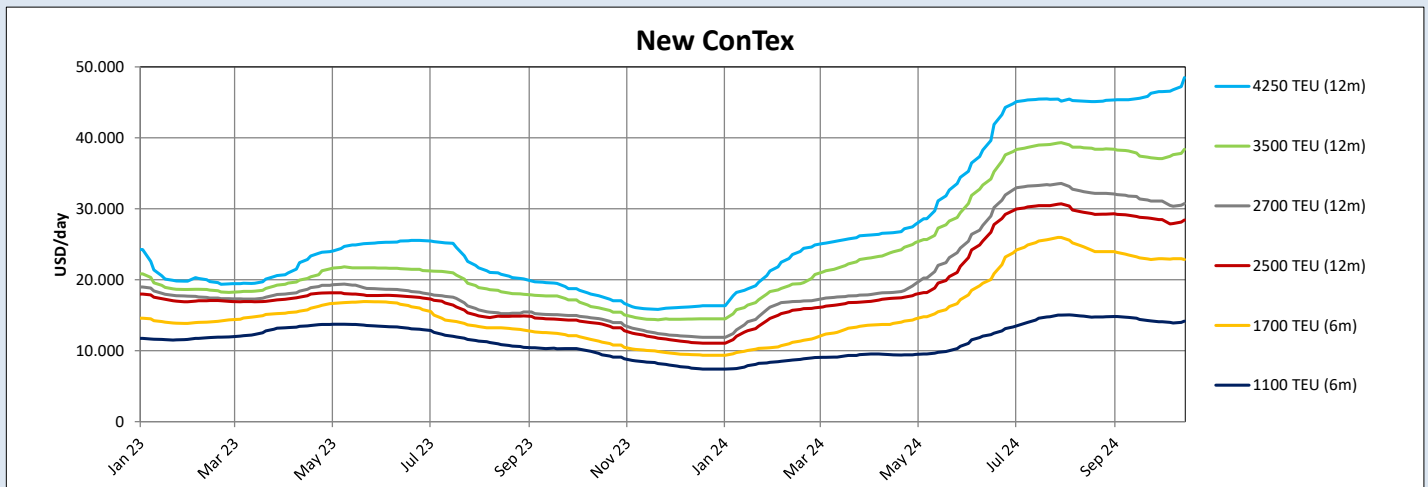
New ConTex*		1297	
17.10.24		6 mos	12 mos
Geared	1100 TEU	\$14.182	n.a.
	1700 TEU	\$22.859	
	2500 TEU	\$28.418	
Gearless	2700 TEU	n.a.	\$30.736
	3500 TEU		\$38.380
	4250 TEU		\$48.495

Legend		
↑	up	+ 2% or more
↗	steady up	from +1% to +1,9%
→	steady	+/- 1%
↘	steady down	from -1% to -1,9%
↓	down	- 2% or less

*New ConTex evaluation is EXCLUDING 1800 TEU for 6 months period, 1100/1700/5700/6500 TEU groups for 12 months period & 2500/2700/3500/4250 TEU groups for 24 months period

New ConTex-Commentary - issued:		17.10.24
<p>The New ConTex turned around with a slight increase after being on a downwards course for a couple of weeks. Finally the smaller sizes were following the 3000+ TEU vessels on the positive trend and all but one segment was in positive territory. Despite the occasional 1100 TEU or 1700 TEU falling into a spot position or getting very close to the redelivery date before fixing, owners stayed strong and were slowly but surely able to improve rates and periods.</p> <p>Although not really visible in the overall figures, 1700 TEU ships were achieving good results in the Mediterranean trading area as currently charterers are paying huge premiums to entice owners to allow trade to Israel or even Ukraine.</p> <p>Larger vessel continue to fix far in advance and also for periods that go beyond the ones indicated in the ConTex, while the Panamax sizes were the main driver behind the increase this week. With extremely low prompt availability this development is expected to continue in the near future.</p>		

New ConTex Development											
Vessel type	Evaluated Period	Today	Week-on-Week		Month-on-Month			Year-on-Year			
		17.10.24	10.10.24	Change	Change	19.09.24	Change	Change	19.10.23	Change	Change
New ConTex*		1297	1275	22 ↗ 1,7%	1,7%	1288	9 ↗ 0,7%	0,7%	606	691 ↗ 114,0%	114,0%
1100 TEU	6 mos	\$14.182	\$13.916	\$266 ↗ 1,9%	1,9%	\$14.398	-\$216 ↘ -1,5%	-1,5%	\$9.409	\$4.773 ↗ 50,7%	50,7%
	12 mos	\$13.364	\$13.036	\$328 ↗ 2,5%	2,5%	\$13.464	-\$100 ↘ -0,7%	-0,7%	\$8.855	\$4.509 ↗ 50,9%	50,9%
1700 TEU	6 mos	\$22.859	\$22.964	-\$105 ↘ -0,5%	-0,5%	\$23.091	-\$232 ↘ -1,0%	-1,0%	\$11.200	\$11.659 ↗ 104,1%	104,1%
	12 mos	\$19.836	\$19.698	\$138 ↗ 0,7%	0,7%	\$19.698	\$138 ↗ 0,7%	0,7%	\$10.641	\$9.195 ↗ 86,4%	86,4%
1800 TEU	6 mos	\$26.809	\$26.745	\$64 ↗ 0,2%	0,2%	\$27.836	-\$1.027 ↘ -3,7%	-3,7%	\$12.243	\$14.566 ↗ 119,0%	119,0%
2500 TEU	12 mos	\$28.418	\$27.932	\$486 ↗ 1,7%	1,7%	\$28.814	-\$396 ↘ -1,4%	-1,4%	\$13.743	\$14.675 ↗ 106,8%	106,8%
	24 mos	\$24.536	\$24.400	\$136 ↗ 0,6%	0,6%	\$24.155	\$381 ↗ 1,6%	1,6%	\$12.500	\$12.036 ↗ 96,3%	96,3%
2700 TEU	12 mos	\$30.736	\$30.359	\$377 ↗ 1,2%	1,2%	\$31.386	-\$650 ↘ -2,1%	-2,1%	\$14.441	\$16.295 ↗ 112,8%	112,8%
	24 mos	\$26.391	\$25.980	\$411 ↗ 1,6%	1,6%	\$26.120	\$271 ↗ 1,0%	1,0%	\$13.223	\$13.168 ↗ 99,6%	99,6%
3500 TEU	12 mos	\$38.380	\$37.620	\$760 ↗ 2,0%	2,0%	\$37.435	\$945 ↗ 2,5%	2,5%	\$15.920	\$22.460 ↗ 141,1%	141,1%
	24 mos	\$31.725	\$30.535	\$1.190 ↗ 3,9%	3,9%	\$31.085	\$640 ↗ 2,1%	2,1%	\$14.440	\$17.285 ↗ 119,7%	119,7%
4250 TEU	12 mos	\$48.495	\$46.780	\$1.715 ↗ 3,7%	3,7%	\$45.590	\$2.905 ↗ 6,4%	6,4%	\$17.588	\$30.907 ↗ 175,7%	175,7%
	24 mos	\$39.478	\$37.865	\$1.613 ↗ 4,3%	4,3%	\$37.135	\$2.343 ↗ 6,3%	6,3%	\$15.838	\$23.640 ↗ 149,3%	149,3%
5700 TEU	12 mos	\$58.289	\$57.583	\$706 ↗ 1,2%	1,2%	\$56.233	\$2.056 ↗ 3,7%	3,7%	\$26.083	\$32.206 ↗ 123,5%	123,5%
6500 TEU	12 mos	\$65.372	\$64.678	\$694 ↗ 1,1%	1,1%	\$63.272	\$2.100 ↗ 3,3%	3,3%	\$29.117	\$36.255 ↗ 124,5%	124,5%



Disclaimer

The brand NewConTex is copyrighted by Verband Hamburger und Bremer Schiffsmakler e.V. ("VHBS e.V.") and is protected by law. The NewConTex may be published only with the source reference © VHBS e.V. It is distributed to the general public for information purposes only and cannot be relied upon as a trading recommendation and does not constitute a solicitation to trade. The reported information is obtained from market sources. While every effort has been made to ensure the accuracy and the completeness of the NewConTex, VHBS e.V. makes no representations, conditions or warranties of any kind, express or implied, about the completeness, accuracy, reliability, or suitability of the NewConTex. Any reliance you place on the NewConTex is therefore strictly at your own risk. Neither VHBS e.V. nor any of its subsidiaries or affiliates nor any employee of the foregoing shall be liable or have any responsibility for any loss, liability or damage, cost or expense including without limitation, indirect or consequential loss or damage, or any loss or damage whatsoever arising from loss of data or profits arising out of, or in connection with, the use of and the reliance on the NewConTex, save for death or personal injury arising from VHBS e.V. negligence and fraudulent misrepresentation that cannot, under German law, be excluded.